



# FLOORCARE



Floorcare Division is trusted as a known solution provider in the Cleaning Industry. Today, taking a cross-section of the entire Institutional market sector, the Groups reputation is very widely witnessed. Its range of products includes Carpet and Upholstery Shampooing, Floor Scrubbing, Escalator Cleaning, Pressure washing and Polishing with probably the largest range of Vacuum Cleaners. Intercare's inventory is complemented by an entire family of ecofriendly solution of Scrubber-Dryers and Outdoor Sweepers. Our range of products do not compromise on quality and are sourced mainly from European Countries, US and Australia. All our Suppliers for IC Blue Line range are ISO 9001 Certified.

As a comprehensive supplier of cleaning equipment's, janitorial accessories, cleaning and restoration chemicals for natural and synthetic stones it's a single source solution provider. After Sales Support Program undertaken by highly trained and skilled staff supported by a dedicated On-site workshop.



# DRY VACUUM CLEANER

IC 12 TUB



SPRINTUS ERA TEC TUB



ACTIVA HT 25.0



IC 101 TUB



BOOSTIX / BOOSTIX 36V BACKPACK



POWR FLITE COMFORT PRO BACKPACK



ORIGIN PACER BACKPACK (BATTERY)



TRUVOX VBU II UPRIGHT



LINDHAUS 380E 450E UPRIGHT



POWR FLITE VALET 70 WIDE AREA



## TECHNICAL DATA

		IC12	ERATEC	HT 25.0	IC101	BOOSTIX/ BOOSTIX36V	COMFORT PRO	ORIGIN PACER	TRUVOX VBU II	380E 450E	VALET 70
PERFORMANCE											
Power	W	900	700	500-800	1000	890/300	1200	1100	312	930/950	2x1000
Airflow	L/sec	44	-	35	39	-	40	31	26	49	39
Air pressure	kPa	22.3	-	23	24.8	-	20	10	-	22	15.9
Noise level	db	63	49-54	67-75	64	67	68	35	71	69	70
Tank Capacity	L	12	13	15	15	5	5.5	5	7	4.5	40
Suction Hose	m	2	2.5	2.5	2.2	1.3	-	-	-	-	-
Weight (w/o Acc.)	Kg	5.8	5.5	7.6	9	6.6	6	4.9	5.5	7.9/8.1	43
Cable	m	8.5	12	15	8.5	15	15	15	-	10	25
Filter		SANI	HEPA	HEPA	SANI	HEPA	HEPA	-	HEPA	3M F.	4 Stage
Dust Bag Standard		Paper	Fleece	Paper	Cloth	Fleece	Paper	Paper	Paper	Paper	Cloth
Origin		Italy	Germany	Sweden	Italy	Germany	US	Australia	UK	Italy	US

# VACUUM CLEANERS - INDUSTRIAL

## BASIC/DAILY USE

### PLANET 1/50 OPT

#### EXCLUSIVE FEATURES

- Reliable construction for intensive use
- Detachable tank and solid cart
- Manual filter shaker
- Big and braked wheels
- Starshaped filter, pcb prefilter and additional cartridge
- Turbine with perfect performance

#### TECHNICAL DATA

PLANET 1/50 OPT

##### PERFORMANCE

Usage	-	Dry
Number of phases		Single phase
Voltage	V	230/50
N. and type of turbine		1xsingle stage
Power	W	1500
Water lift	mmH <sub>2</sub> O	1800
Airflow	m <sup>3</sup> /h	220
Tank Capacity	l	50
Diameter of inlet	mm	60
Filtering surface	cm <sup>2</sup>	12.000
Sound Pressure Level	dB(A)	74
Dimensions (LxWxH)	mm	66x660x1600
Weight	Kg	65



### PLANET 152 ATEX

#### EXCLUSIVE FEATURES

- Reliable construction for intensive use
- Detachable tank and solid cart
- Manual filter shaker
- Big and braked wheels
- Industrial framework with aisi 304 with detachable tank
- Starshaped filter, PCB prefilter and additional cartridge
- Vacuum relief valve and filtration level indicator
- Long lasting turbine with perfect performance
- Explosion proof turbine and design for atex zone 22
- Conductive wheels with brakes
- Static dissipating filters
- PCB prefilter & additional cartridge
- Grounding system

#### TECHNICAL DATA

PLANET 1/50 OPT

##### PERFORMANCE

Usage	-	Dry
Number of phases		Single phase
Voltage	V	220-240
N. and type of turbine		1xsingle stage
Power	W	1500
Water lift	mmH <sub>2</sub> O	1800
Airflow	m <sup>3</sup> /h	220
Tank Capacity	l	35
Diameter of inlet	mm	60
Filtering surface	cm <sup>2</sup>	12.000
Sound Pressure Level	dB(A)	74
Dimensions (LxWxH)	mm	710x660x1280
Weight	Kg	62.5



# WET & DRY VACUUM CLEANER

IC PROFESSIONAL  
202



IC PROFESSIONAL  
301



IC PROFESSIONAL  
601



IC PROFESSIONAL  
701



## TECHNICAL DATA

		IC 202	IC 301	IC 601	IC701
PERFORMANCE					
Power	W	1200	1200	2400	3300
Airflow	L/sec	47	58	117	175
Air pressure	kPa	21.7	24.2	24.2	24.2
Noise level	db	72	72	72	72
Tank Capacity	L	28	33	62	78
Suction Hose	m	2.5	2.5	2.5	2.5
Weight (without Acc.)	Kg	9.5	21.5	25	27
Cable	m	12	12	12	12
Filter		Molleton	Molleton	Molleton	Molleton
Origin		Italy	Italy	Italy	Italy

# CARPET CARE

SPRINTUS SE7  
UPHOLSTERY CLEANER



Carpet Detergent



Restore



Upholstery Tool  
& Carpet Nozzle

POWR-FLITE PROWLER  
SPRAY EXTRACTOR



Carpet Detergent



Restore



Upholstery Kit  
& Wand

TRUVOX - HYDROMIST  
COMPACT/EXTRACTOR



Carpet Detergent



Restore



Upholstery Kit  
& Wand

## TECHNICAL DATA

		SPRINTUS SE7	POWR FLITE PROWLER	TRUVOX HYDROMIST
PERFORMANCE				
Power	W	1100	1300	1200
Cleaning Path	cm	-	45.7	25
Brush	rpm	-	1800	800-1000
Capacity	L	6.5	35	14
Bar	bar	4	7	15/21.76
Noise level	db	-	73	73
Weight	kg	13	47	22.5
Cable	m	7.5	15	12
Origin		Germany	US	UK



# SINGLE DISC MACHINE

TRUVOX ORBIS COMPACT



POLIVAC MINI SCRUBBER



Interpine / APD



Spray Buff



IC ORBIS 200/400/DUO



SPRINTUS HERCULES



KLINDEX KROMA 2.5HP & 3HP



ORBOT VIBE ORBITAL



SPRINTUS TITAN ORBITAL



ORBOT SPRAYBORG



POLIVAC PV 25 SUCTION POLISHER



POLIVAC STINGRAY HIGH SPEED



TRUVOX ORBIS UHS 1500 HIGH SPEED



POLIVAC DOMINATOR



## TECHNICAL DATA

PERFORMANCE		ORBIS COMPACT	MINI SCRUBBER	ORBIS 200/400/DUO	HERCULES	KROMA 2.5/3 HP	ORBOT VIBE	TITAN ORBITAL	ORBOT SPRAYBORG	PV25	STINGRAY	ORBIS UHS	DOMINATOR
Power	W	550	560	1100	1500	1865/2230	1400	1100	1400	1400	1600	1100	1600
Speed	rpm	240	187	190/380	175	150/155	80/1725	80/1490	80/1725	392	1500	1500	1700
Brush P	gm/cm <sup>2</sup>	45.5	-	22/22/28	-	24	-	-	-	40	10,000	4	10,000
Diameter	cm	28	30	43	43	43	43	43	43	40	50	43	40
Noise level	db	62	-	53	54	-	59	56	59	-	-	56.6	-
Cable	m	15	15	15	12	-	15	12	15	15	15	20	15
Weight	kg	22	32	32/40/40	62	53	43	46	48	46	46	62.5	42
Tank C	L	5	-	12	12	18	15.1	12	11.4	-	-	-	-
Origin		UK	Australia	UK	Germany	Italy	US	Germany	US	Australia	Australia	UK	Australia

# STEAM CLEANER

S04



Floor - Degreaser  
Carpet - Restore

**KEY FEATURES**

- Continuous Fill Boiler allowing refill with no reheat time
- Compact and Lightweight
- Steam Regulator to Control the Volume of Steam
- Full Steam Only tool kit in a accessory bag as standard

S08



Floor - Degreaser  
Carpet - Restore

**KEY FEATURES**

- Continuous Fill Boiler allowing refill with no reheat time
- Compact and Lightweight
- Steam Regulator to Control the Volume of Steam
- Full Steam Only tool kit in a accessory bag as standard

SD4



Carpet - Detergent



Floor - Degreaser  
Carpet - Restore

**KEY FEATURES**

- Suited for smaller areas of chewing gum removal
- Continuous Fill Boiler allowing refill with no reheat time
- Steam Regulator to Control the Volume of Steam
- Full Steam & Detergent tool kit in accessory bag

SD8



Carpet - Detergent



Floor - Degreaser  
Carpet - Restore

**KEY FEATURES**

- Ideally suited for larger areas of chewing gum removal
- Continuous Fill Boiler allowing refill with no reheat time
- Integral Detergent Tank
- Steam Regulator to Control the Volume of Steam
- Full Steam and Detergent tool kit as standard

SDV4



Carpet - Detergent



Floor - Degreaser  
Carpet - Restore

**KEY FEATURES**

- Continuous Fill Boiler allowing refill with no reheat time
- Integral Vacuum System
- Detergent delivery system
- Steam Regulator to Control the Volume of Steam
- Full steam, detergent & vacuum tool kit as standard

SDV8



Carpet - Detergent



Floor - Degreaser  
Carpet - Restore

**KEY FEATURES**

- Continuous Fill Boiler allowing refill with no reheat time
- Integral Vacuum System
- Detergent delivery system
- Steam Regulator to Control the Volume of Steam
- Full steam, detergent & vacuum tool kit as standard

**TECHNICAL DATA**

PERFORMANCE

		S04	S08	SD4	SD8	SDV4	SDV8
Vacuum Power	W	-	-	-	-	850	850
Boiler	W	1950	2200	1950	3000	1950	3000
Steam Pressure	bar	4.5	8	4.5	8	4.5	8
Vacuum		No	No	No	No	Yes	Yes
Detergent		No	No	Yes	Yes	Yes	Yes
Water Tank	Ltr.	5	5	5	5	2.5	5
Detergent Tank	Ltr.	-	-	2.5	5	2.5	2.5
Boiler	Ltr.	1.8	3.3	1.8	3.3	1.8	3.3
Vacuum Tank	Ltr.	-	-	-	-	12	12
Weight	Kg	12	20	20	30	30	40
Origin	UK	UK	UK	UK	UK	UK	UK

# CHEWING GUM REMOVER

**ECO GUM  
(BACKPACK MIDI)**



Broom

**KEY FEATURES**

- No trailing leads
- No generators - silent operation!
- Handheld remote control unit
- 8 Hour battery life
- Battery charger
- Deck brush
- Gum Service Pack:
  - 2 x Gas cartridges
  - 4 x Bottles of detergent
  - 2 x Eco round brush

# PRESSURE WASHER

IPC PW C40

Car Shampoo & APD

Degreaser



IPC C45

APD / Degreaser



IPC E-100

Car Shampoo & APD

Degreaser



IPC PW H50

Car Shampoo & APD

Degreaser



IC FIREBOX 40  
HOT WATER



IPC MLC  
SINGLE PHASE



SURFACE  
CLEANER

APD / Degreaser



## TECHNICAL DATA

		PW C40 SINGLE / THREE	C45	E-100	PW H50	FIREBOX 40	MLC SINGLE PHASE	SURFACE CLEANER
PERFORMANCE								
Pressure Bar	bar/Mpa	30-130/3-13 - 30-180/3-18	30-170/3-17	170/17	30-200/3-20	200/20	30-130/3-13	275/500
Flow Rate	l/h	600 - 800	500	450-600	500-1000	360-1260	600	-
In/out let Water Max	C	50 - 50	50	80	30-140	140	50	120
Power Supply	Ph-V-Hz/A	1-230-50-14.7 - 3-400-50-8.6	1-230-50/14.5	3-400-50/25	3-400-50/13.2	1-230-50/2	1-230-50/14,5	-
Absorbed Power	kW	3,3 - 4,7	3,2	15,9	6,4	0,3	3	-
Detergent Tank	Ltr	7,5 - 7,5	-	22	22	-	-	-
Weight	kg	44 - 47	47	130	140	111	35	12
Fuel Tank	l	-	-	-	25	18	-	-
Engine Type/Power	Hp	-	-	-	-	-	-	-
Origin		Italy	Italy	Italy	Italy	Italy	Italy	Swiss

# AIR BLOWER

3 SPEED  
CARPET DRYER



TRUVOX  
3-SPEED



## TECHNICAL DATA

		IC 3 SPEED	TRUVOX 3 SPEED
PERFORMANCE			
Motor	W	900	713
Power	V	230	230
Air Velocity	m <sup>3</sup> /min	110/130/160	-
Weight	Kg	9	15
Cable	m	7	6
Origin		China	UK







## WALK BEHIND SCRUBBER DRYER

### A-6 BT WITH TRACTION

A-6 is designed for maximum performance, easy handling, low maintenance, superb cleaning results and yet it is an eco-friendly solution.

A-6 is designed for heavy-duty cleaning but is easy to handle and flexible in every day cleaning situations. Suitable for routine cleaning, it is ideal for industrial environments and heavy scrubbing tasks



Low Foam  
Chemical



HD Degreaser /  
Faber 30 - Epoxy Floor



20"



#### TECHNICAL DATA

PERFORMANCE	A-6 BT
Working Width	560 mm
Squeegee Width	830 mm
Working Capacity	2500 sqm per hour
Working Time	3 to 5 hours
Brush Pressure	40 KG
Brush RPM	155 RPM
Solution Tank	60 L
Recovery Tank	65 L
Batteries	24 V (2x12)
Brush Motor	24 V/ 550 W
Vacuum Motor	24 V /500 W
Traction Motor	24 V/300 W

## RIDE ON SCRUBBER DRYER

### A-7R/660

A-7R compact ride-on scrubber dryer provides commercial users with professional floor cleaning for large areas. Clean tight spaces and narrow aisles with A-7R's compact design and highly maneuverable handling.



Low Foam  
Chemical



HD Degreaser /  
Faber 30 - Epoxy Floor



13"



### K-7R/660

Clean both large areas and tight spaces easily with a floor scrubber designed for greater efficiency and low cost. The K7 Ride-On Scrubber Dryer is designed for easy of use and easy maintenance.



Low Foam  
Chemical



HD Degreaser /  
Faber 30 - Epoxy Floor



13"



### K-8R

K8 Intelligent Ride-on floor scrubber, Equipped with recovery tank, solution tank sensor, can be used for a long time, stable quality; Effectively protect the motor, prolong the service life.



Low Foam  
Chemical



HD Degreaser /  
Faber 30 - Epoxy Floor



17"



#### TECHNICAL DATA

PERFORMANCE	A-7R/660	K-7R/660	K-8R
Working Width	660 mm	2 X 330 mm (660 mm)	2 x 430 mm
Squeegee Width	830 mm	830 mm	1100 mm
Working Capacity	4200 sqm per hour	4200 sqm per hour	5525 sqm per hour
Brush Pressure	55 KG	50 KG	65 KG
Brush RPM	155 RPM	155 RPM	180 RPM
Solution Tank	85 L	85 L	130 L
Recovery Tank	95 L	95 L	150 L
Batteries	24 V (2x12)	24 V (2x12)	24 V (4x6)
Brush Motor	24 V/2 x 380 W	24 V/2 x 380 W	24 V/ 2 x 380 W
Vacuum Motor	24 V/500 W	24 V/500 W	24 V/ 500 W -3 Stage
Traction Motor	24 V/500 W	24 V/500 W	24 V/ 650 W

## WALK BEHIND SWEEPER

### AL-920 MANUAL SWEEPER

AL-920 manual sweeper is designed with dust removal skylight, which can effectively prevent dust overflow and cause secondary pollution. Equipped with rolling brush and two side brush, sweeping width up to 920mm, can quickly sweep a large area.

#### TECHNICAL DATA

PERFORMANCE AL-920

Drive Mode Manual

Working Width 920 mm

Working Capacity 3860 sqm per hour

Waste Container Capacity 40 L



### 510 M

- Main brush with neutral design to collect debris forward.
- Debris hopper of great capacity, easily removable for manual discharge operations
- Easy to use thanks to intuitive commands. Handle adjustable at 2 halfway heights.
- Chassis in fully coated steel for maximum reliability and duration.
- Main brush pressure adjustment.

#### TECHNICAL DATA

Sweeping Width 670 mm

Main brush Width 490 mm

Productivity (max speed) 1750 m<sup>2</sup>/h

Waste hopper 24 l

Power supply Manual

Weight Net 24 Kg

Dimensions (LxWxH) 1300x920x920cm





# MULTIPURPOSE MACHINE

## MULTIWASH™ PRO

The new re-designed range of Multiwash PRO scrubber dryers will wash, scrub and dry in just one single pass. Giving improved cleaning results, your floors will be left clean and dry ready for your customers and staff to walk on.



All Purpose for Floors/Carpet Shampoo for Carpet & Degreaser for Escalator

Brushes for Carpet/Hard Floors/Escalators

### SIMPLE

One simple push button to dispense cleaning solution



### 4 LITRE TANK

Accessible and removable tank for fast filling, emptying and cleaning



### ACCESSORIES



Side brush allows you to clean right up to the edge



Trolley allows for easy transportation



7 litre solution tank for greater productivity

### VERSATILE

Effective on all floors with brushes available for carpets, hard floors, escalators and entrance matting

### EFFICIENT

Exceptional pick up of solution that leaves floors ready to walk on in seconds

### INCREASED PRODUCTIVITY

Increased brush diameter gives 12% more scrubbing power providing an even better cleaning performance

### POWERFUL

Counter-rotating cylindrical brushes scrub & lift dirt & water onto a rotating recovery drum to pick up solution

**EASY**  
Handle assembly is quick and easy to assemble to the base, ready for the machine to be used



**EFFECTIVE**  
Easy to change brush pressure to accommodate floor type and level of dirt



### IDEAL FOR:

- FOOD SERVICE AREAS
- HOSPITALS
- NURSING HOMES
- RETAIL PREMISES
- SCHOOLS

- Increased brush diameter gives improved cleaning performance
- Exceptional productivity with a 4 litre tank, if you need more there is an optional 7 litre tank
- Effective on all floors from carpets to hard floors, escalators to entrance matting
- Leaves floors ready to work on in minutes
- Accessible and removable tanks for fast filling, emptying and cleaning
- The new design is easy to assemble, use and maintain
- Optional brushes for carpets, hard floors and escalators
- Available in 24cm, 34cm and 44cm cleaning widths.

### TECHNICAL DATA

		MULTIWASH™ PRO 340	MULTIWASH™ PRO 440
<b>PERFORMANCE</b>			
Voltage AC (~)/ Frequency	V/Hz	230/50	230/50
Motor Power (+ pump)	W	950 + 26	1150 + 26
Solution tank capacity	litres	4	4
Recovery tank capacity	litres	2	2.7
Productivity Rate	m <sup>2</sup> /h	350	450
Brush width	cm	34	44
Brush speed	rpm	650	650
Brush pressure	g/cm <sup>2</sup>	190	170
Sound pressure level	dB(A)	69	71
Dimensions (L x W x H)	cm	39 x 45 x 111	39 x 55 x 111
Weight	kg	26.5	31
Cable length	m	12	12
Origin		UK	UK



# ASSORTED MACHINES

## MEDUSA

Industrial battery-powered sweeper for the quick, quiet and cordless cleaning of all surfaces, indoor and outdoor.

The full floating main cylinder brush individually adapts to any surface, whether hard surface or carpet.

Standard quick charging unit. Charging time of 90 minutes per battery. Efficient regardless of batteries level at the time of charging. Fully-equipped with two batteries, the operation time lengthens to 90 minutes.



### TECHNICAL DATA

Voltage (charging unit)	230 V / 50 Hz
Operating voltage	10,8 V / 1,5 Ah
Max. power	25 W
Battery duration	45 min / battery
Sound pressure level	63 dB(A)
Container material	plastic
Container volume	2 litres (gross)
Weight	2,8 kg
Dimensions (L x W x H)	30 x 36 x 11 cm

## CIMEX X46

Escalator and traveller cleaner that gives a powerful cleaning and vacuuming performance and is ideal for airports, shopping centers, retail stores, underground stations and hotels.

- Powerful vacuum to pick up dust
- Easy to change disposable bags
- Portable for multi-escalator sites
- Powered rotating brushes for fast, effective cleaning



### TECHNICAL DATA

Voltage AC (~) / Frequency V/Hz	250/50
Vacuum motor power	W 2 x 750
Brush diameter	cm 15
Brush speed	rpm 290
Brush motor power	W 190
Sound pressure level	dB(A) 79
Dimensions (L x W x H)	cm 89 x 46 x 23
Weight	kg 44
Cable length	m 15
Capacity	l 5

## ORBIS MOTORSCRUBBER

Motor Scrubber is a battery powered scrubbing machine that is ideal for confined areas. Suitable for retail, healthcare, leisure and education facilities.

- Provides 4 hours runtime for maximum productivity
- 20 cm (8 inch) cleaning width which is ideal for stairwells and confined areas
- 7.5 cm handle enables hard to reach areas to be accessed including walls



### TECHNICAL DATA

voltage AC (~) / Frequency V/Hz	100 - 240 ~ 50 / 60
Charging voltage	DC 12V
Battery details	1 x 12V 7.0 Ah
Pad/brush speed	rpm 320
Pad/brush diameter	cm 20
Run time	hrs 4
Charge time	hrs 12
Dimensions (L x W x H)	cm 20 x 20 x 135
Weight of battery & harness	Kg 3
Weight of machine	Kg 2

## J-4000

The Jiffy® Steamer J-4000 are used in commercial & industrial applications in a variety of settings including:

- Removing wrinkles from all fabrics
- Reducing the need to iron
- More gentle on fabrics than ironing
- May be used on most materials or fabrics
- Great for tablecloths, bedding, and delicate materials



- Available with 6" wide metal head
- All brass couplings
- Solid die cast aluminum outer housing for durability
- 1500 watt incoloy heating element
- 50/60 Hertz electrical system
- 304 stainless steel internal boiler tank
- Color-coded high temperature wiring
- Convenient STANDBY and STEAM settings
- Fusible link with automatic shut-off for safety
- 360 degree swivel casters for mobility
- Carton size: 20" x 12 x 13"
- Made in the USA

## MINIPOWER CPL

Orbital machine. Clean and polish where rotary cleaners cannot work

Minipower is a little machine with a big performance! With its "square" brush it can clean and polish even where the rotary cleaning machines cannot. It's the ideal solution for stairs, corners, small bathrooms, kitchens and narrow areas.



### TECHNICAL DATA

Motor Watt Max	150
Volt	110/220
Hertz	50/60
Speed Tools	45 osc/sec
Working width	250x120/310x140mm

# CLEANING ACCESSORIES

## KGS SPEEDLINE

The original standard in stone and concrete polishing industries. Excellent in quality and performance. This KGS technology is exceptional for dry polishing of non colored concrete where its dark coloured resin leaves a natural concrete coloured finish. The KGS Speedline diameter 125 mm is the ideal size for edge polishing of floors allowing access under pipes and around obstacles.

### KEY BENEFITS

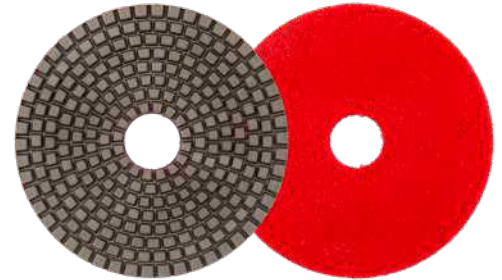
- Excellent quality and performance
- Leaves a natural concrete coloured finish
- Ideal size for edge polishing of floors

### PRODUCT INFORMATION

Bond: Resin bonded diamond  
Diamond height: 2,5 mm  
Backing: Velcro® (QRS)  
Dimension: 125 mm

### POLISH LEVELS

Gloss	Final grit
Matt closed	200
Silky	400
Low gloss	800
Medium gloss	1500
High gloss	3000



### AVAILABLE GRIT SIZES



## CLEANING & POLISHING PADS

### RED PAD - COARSE

Step 1 – Coarse pad is mainly used for heavy duty surface renovation. Intended for deep cleaning and as a base to establish a good starting point for the rest of the process.

- Rough, greasy or very dirty surfaces.
  - Process starter/ Occasional use
- Available in 17"



### BLUE PAD - MEDIUM

Step 2 – Medium pad can be used for deep cleaning and produces an economical light reflective finish, most popular in large industrial and commercial applications.

- Very high traffic floors, dusty areas.
  - Occasional deep cleaning/ Daily for light gloss
- Available in 17"



### YELLOW PAD - FINE

Step 3 – Fine pad is intended for both daily polishing and cleaning, producing a clear reflective shine.

- All floors/ Maintenance
- Regular finish/ Daily for high gloss

Available in 17"



### GREEN PAD - VERY FINE

Step 4 – Very Fine pad, used wet or dry will finish off the four step process leaving a polish to your floor with the highest shine available. Daily use will maintain and improve the polish.

- All floors/ Cleaning/ Buff
- Daily for Cleaning/ Extra high gloss

Available in 17"



### CREAM PAD - ULTRA FINE

Ultra Fine pad for extra high gloss

Available in 17"



# CLEANING ACCESSORIES

## FLOOR CLEANING PADS

### STRIPPING

To remove finish, sealer and contaminants from the floor surface.

Low Speed  
175–600 RPM



#### Black Stripped Pad

For consistent, proven performance, with a longer pad life. 40% more aggressive than competitive pads.



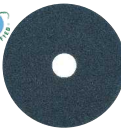
#### Brown Stripped Pad

Conformable stripping pad for uneven floors which strips prior to refinishing. Super heavy duty scrubbing for removal of 2-4 coats prior to recoating

### SCRUBBING

To provide a fresh new surface for finishing.

Low Speed  
175–600 RPM



#### Blue Cleaner Pad

Heavy-duty scrubbing of floors. 7X faster than competitive pads.

### CLEANING

To remove light soil and other contaminants.

Low Speed  
175–600 RPM



#### Red Buffer Pad

For everyday cleaning & light scrubbing. Removes light soil, scuff marks and black heel marks.



#### White Super Polish Pad

Ideal for removing soil and scuff marks with minimal dulling. Also used to polish wood floors.

### BUFFING

To remove scuffs and black heel marks & enhance floor appearance.

Low Speed  
175–600 RPM



#### Red Buffer Pad

For everyday cleaning & light scrubbing. Removes light soil, scuff marks and black heel marks.



#### White Super Polish Pad

Ideal for removing soil and scuff marks with minimal dulling. Also used to polish wood floors.

### STONE FLOOR MAINTENANCE

To clean and polish stone floors with medium shine in good condition.

"Low to Ultra High Speed  
175–1500 RPM & Above"



#### Purple Diamond Floor Pad

Diamond-coated floor pad for cleaning and polishing marble, terrazzo, slate and polished concrete flooring.

#### FEWER PASSES

Specially designed to improve productivity, 3M™ Floor Pads clean and scrub more effectively on each pass. So it takes less time to achieve the results you need.



#### CONSISTENT PERFORMANCE

Many 3M™ Floor Pads have abrasive minerals distributed uniformly throughout the entire pad – inside and out. So even as they wear, you get consistent, high quality results.



#### LONGER LIFE

It takes 4X as many competitive pads to strip a floor compared to a 3M™ Stripping Pad. Longer-lasting floor pads need to be replaced less often, contributing to less waste in landfills.

#### FEWER CHEMICALS

3M's abrasive technology is effective using only water for many floor maintenance operations.



#### ENVIRONMENTALLY RESPONSIBLE

Many 3M™ Floor Pads are Green Seal™ Certified based on a design for significantly improved performance, durability, or both, extending the useful life of the floor pad and reducing solid waste generation.

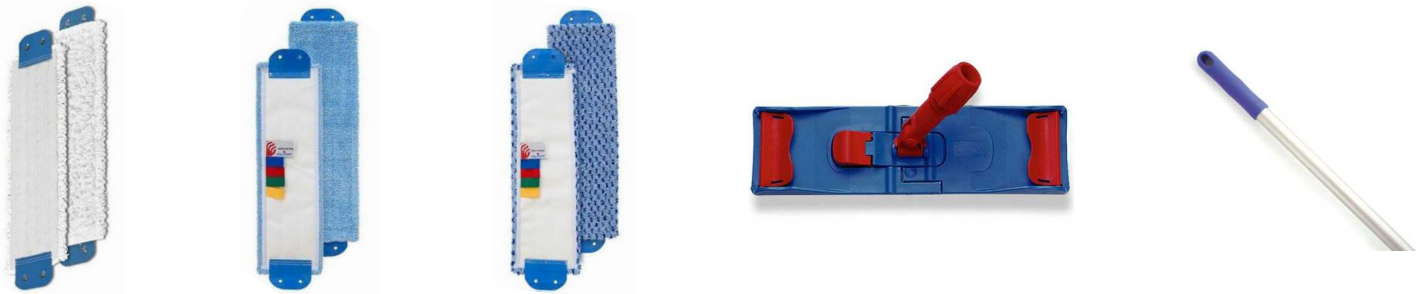


# FLOORCARE JANITORIAL

## WET MOPS



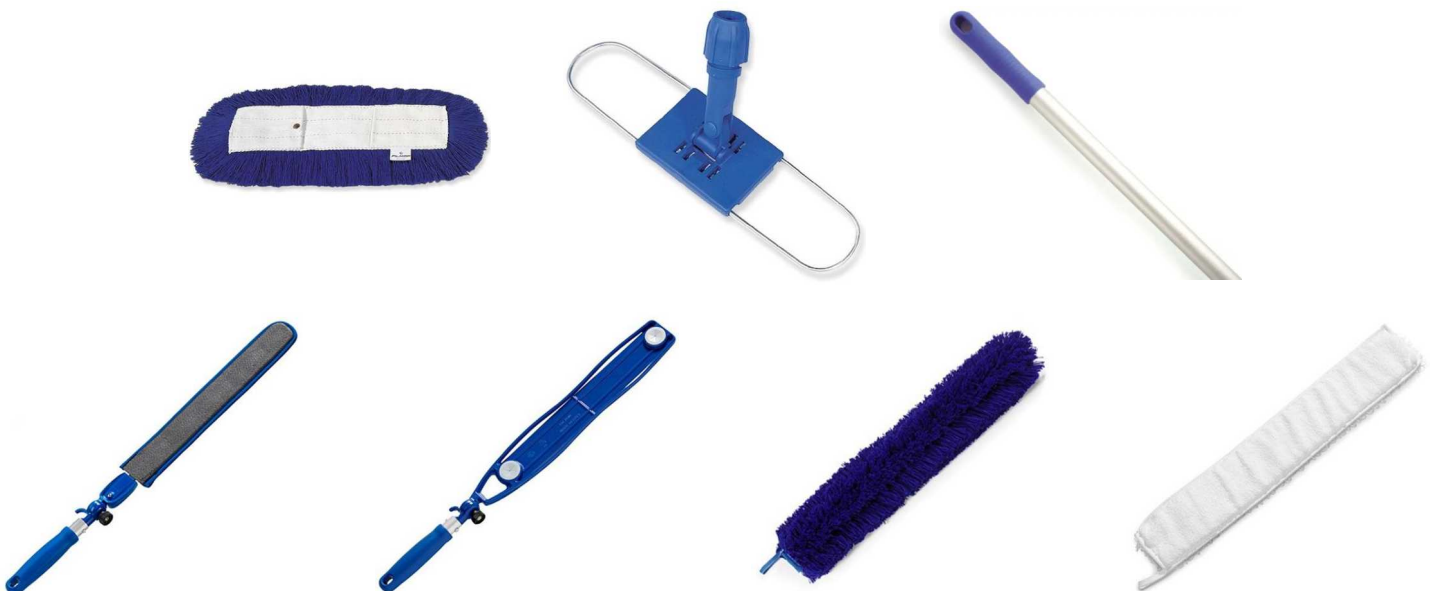
## Speedy Mop (40 & 50 cm)



## Damp Mopping (40 & 60 cm)



## Dust Control Mop and Spilo & Snake Duster (40, 60, 80 & 100 cm)





# FLOORCARE JANITORIAL

Scissor Mop (100 cm)



Mop Bucket



Wringers



Signage



Dust Pan



Color

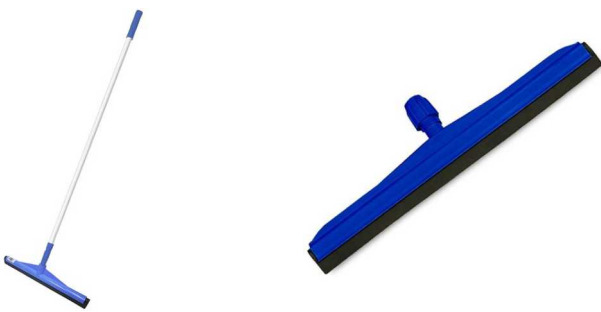


# FLOORCARE JANITORIAL

Brooms (30, 45 & 60 cm) - (Nylon, Hard, Soft & Coco)



Floor Squeegee (45, 55 & 75 cm)



Carry Basket



Window Cleaning Set (25, 35 & 45 cm)



Nipper

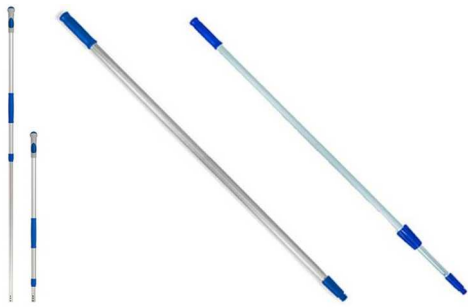


Dusters



# FLOORCARE JANITORIAL

## Telescopic Poles



## Wax Polish Applicator



## Trolleys



## Scraper



## Disinfectant Mop (40 & 60 cm)



## Products compatible for Food Grade Sector







# CLEANING CHEMICALS

## HEAVY-DUTY CLEANING



### FABER 30

- Effective on stubborn greasy dirt
- Ideal to remove shoes/tire marks
- Deep Extractive action



CAN BE APPLIED WITH



Cloth, mop, single-disc machine, hard floor cleaner

#### WHERE TO APPLY

Slate, Cotto, Granite, Porcelain gres Lappato, Porcelain gres Honed, Porcelain gres Natural or Structured, Porcelain gres Structured, Marble, Terracotta and Travertine



### DISYCOTT

- It's specific for cement residues
- Acid pH
- Also effective on paint, efflorescences, and inorganic dirt



CAN BE APPLIED WITH



Scrubbing brush, brush, mop and floor machine.

#### WHERE TO APPLY

Cotto, terracotta tiles, porcelain stoneware, granites, stones not acid sensible, clinker, enamelled ceramic, porphyry, quartz base agglomerates.



### EPOXY RESIDUE REMOVER

- It removes stubborn epoxy residues
- Ready to use
- Fast action



CAN BE APPLIED WITH



Cloth, mop, single-disc machine

#### WHERE TO APPLY

This product can be used on both indoor and outdoor surfaces.



### DETERFUG

- Heavy-duty cleaning
- Effective on organic and inorganic dirt
- It removes deep metal marks



CAN BE APPLIED WITH



Scrubbing brush, brush, mop and floor machine.

#### WHERE TO APPLY

All kind of surface resistant to acids. Natural stones, honed, brushed, aged. Slate, quartz agglomerates, enamelled ceramic, honed and structured terracotta tiles, polished granite, removal of grout (even epoxy).



### COTTOSOLV

- It removes greasy dirt and oily stains
- Alkaline pH
- Concentrated formula



CAN BE APPLIED WITH



Scrubbing brush and floor machine.

#### WHERE TO APPLY

Cotto, terracotta tiles, marbles, slates, granites, stones, travertine, porcelain stoneware and ceramics.



### DEC 21

- Solvent-based formula
- It removes greasy dirt and oily stains
- Deep action



CAN BE APPLIED WITH



Brush, scrubbing brush, floor machine.

#### WHERE TO APPLY

Terracotta, marble, granite, slate, stones natural, polished, honed, brushed, sanded or natural, porcelain stoneware, ceramic, etc.

## DAILY CLEANING



### NEUGEL

- A little goes a long way
- Nourishing formula
- It doesn't affect the applied treatments



CAN BE APPLIED WITH



Floor Machine and mop

#### WHERE TO APPLY

The product can be applied on every type of natural surface.



### ALGAFLOOR

- A little goes a long way
- Neutral pH
- Specific for low-absorbing materials



CAN BE APPLIED WITH



Scrubbing brush - Floor Machine - Wet vacuum

#### WHERE TO APPLY

Dilute product as recommended DILUTION: 20 - 30 g / Lt for ceramic, quartz and porcelain stoneware 40 - 50 g/lit on general stone and marble surfaces. Proceed to clean as with traditional cleaner



## RESTORATION



### ABR 600

- Micro-honing cream
- It restores defects and abrasion
- Soft matt finish



CAN BE APPLIED WITH



Manually - Floor machine - Roto-Orbital

#### WHERE TO APPLY

Marbles, Stones, Ceramic and reconstituted materials.





# CLEANING CHEMICALS

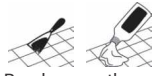
## STAIN REMOVAL

### OXIDANT



- Humidity stains, smog, tannin, yellowing...

CAN BE APPLIED WITH



Brush, pour the product directly

WHERE TO APPLY  
Every type of material.

### MAR GEL PLUS



- Rust

CAN BE APPLIED WITH



Brush

WHERE TO APPLY  
Marbles and limestones.

### EXTRACTOR



- Humidity stains, smog, tannin, yellowing...

CAN BE APPLIED WITH



Pour the product directly

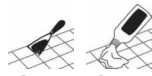
WHERE TO APPLY  
Every type of material.

### NO MAC GEL



- Coffee, drinks, ink, mold, algae...

CAN BE APPLIED WITH



Brush, pour the product directly

WHERE TO APPLY  
Every type of material.

### FABER POULTICE



- Humidity stains, smog, tannin, yellowing...

CAN BE APPLIED WITH



See stain cleaner technical data sheet

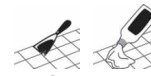
WHERE TO APPLY  
The product can be applied on any kind of surface.

### NO RUG



- Rust

CAN BE APPLIED WITH



Brush, pour product directly

WHERE TO APPLY  
Any type of silica material and also some unpolished marble materials.

## ACID & SCRATCH RESISTANT

### AS 930 CP



- Stain-resistant
- Scratch-resistant
- Safe for food contact

CAN BE APPLIED WITH



Brush, roller, mop or sprayer.

WHERE TO APPLY  
For internal/external aged, rough or sanded marble, granite & natural stone. Cobblestone & slate surfaces.



## STAIN RESISTANT - PROTECTION

### P 147



- No film or patina
- Matt-finish
- It makes maintenance easier

CAN BE APPLIED WITH



Brush, Roller, Lambs wool, Sprayer

WHERE TO APPLY  
Agglomerate cement-marble, Agglomerate resin-marble, Slate, Sandstone, Basaltina - Lava Stone, Molted basalt, Cement tile, Concrete, Cotto, Granite, Limestone, Marble, Manufactured Stone (Eco-stone), Porphyry, Quartzite, Terracotta, Travertine, Tuff

### DEEP ENHANCER



- Specific for compact surfaces
- It doesn't alter surface shine
- It repels stains and facilitate the maintenance

CAN BE APPLIED WITH



Brush, Roller, Lambs wool, Sprayer

WHERE TO APPLY  
For internal/external polished marble, granite and any compact natural stone. Quartz agglomerate, porcelain tiles and ceramics.

## ANTI SLIP

### YS ONE

### YS ONE 30



- It maintains the original look
- It doesn't leave film or residues
- No maintenance needed

CAN BE APPLIED WITH



SPRAYER, BRUSH, MOP.

WHERE TO APPLY  
For any type of slippery silica material.

### SAFE MARBLE



- It maintains the original look
- It doesn't leave film or residues
- No maintenance needed

CAN BE APPLIED WITH



Brush, lambswool applicator, roller, airless

WHERE TO APPLY  
Can be used on both indoor and outdoor surfaces. Marble-cement agglomerates, marble-resin agglomerates, limestone, travertine, & lime-based stone in general.



# PROTECTION CHEMICALS

## SEALERS



### HIDRO PROTECTOR MM

- High performing
- Water-based formula
- Certified safe for food contact



CAN BE APPLIED WITH



Brush, Roller, Lambs wool, Sprayer

#### WHERE TO APPLY

For internal/external marble, granite and natural stone.



### HIDRO SST

- Specific 6-sides treatment
- Water-based formula
- Certified safe for food contact



CAN BE APPLIED WITH



Brush, Roller, Lambs wool, Sprayer

#### WHERE TO APPLY

For internal/external polished or rough marble, granite and natural stone.



### PROTEX WB

- High performing
- Water-based formula
- Certified safe for food contact



CAN BE APPLIED WITH



Brush, Roller, Lambs wool, Sprayer

#### WHERE TO APPLY

Agglomerate cement-marble, Agglomerate resin-marble, Agglomerate resin-quartz, Slate, Sandstone, Basaltina - Lava Stone, Granite, Limestone, Marble, Quartzite and Travertine



### DPS

- Innovative solvent-based protection
- Suitable for already installed and damaged surfaces
- Effective also for low absorbing stones

CAN BE APPLIED WITH



Brush, Roller, Lambs wool, Sprayer

#### WHERE TO APPLY

Agglomerate cement-marble, Agglomerate resin-marble, Agglomerate resin-quartz, Slate, Sandstone, Basaltina - Lava Stone, Granite, Limestone, Marble, Quartzite and Travertine

## STAIN RESISTANT - PROTECTION



### HIDRO 150

- Water-based formula
- UV Resistant
- Long-Lasting



CAN BE APPLIED WITH



Brush, Roller, Lambs wool, Sprayer

#### WHERE TO APPLY

For internal/external marble, granite and natural stone. Artificial materials, rough stone in general.



### PROTW LUX

- Fast-drying
- Strong Repellency
- It doesn't alter the original look

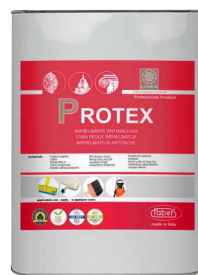
CAN BE APPLIED WITH



Brush, Roller, Lambs wool, Sprayer

#### WHERE TO APPLY

For internal or external terracotta, marble, granite, structured ceramic and natural stones. For any material with medium/high absorbency.



### PROTEX

- Fast-drying
- Strong Repellency
- It doesn't alter the original look

CAN BE APPLIED WITH



Brush, Roller, Lambs wool, Sprayer

#### WHERE TO APPLY

For internal or external terracotta, marble, granite, structured ceramic and natural stones. For any material with medium/high absorbency.



### B1/700

- Fast-drying
- Strong Repellency
- It doesn't alter the original look

CAN BE APPLIED WITH



Brush, Roller, Lambs wool, Sprayer

#### WHERE TO APPLY

For internal or external honed and rough limestone, natural stone, marble, granite, volcanic stone.

## POLISHING



### STAR SHINE EASY

- No water required
- Provides dirt resistance
- It restores the brightness

CAN BE APPLIED WITH



Floor machine 150/175 rpm or orbital wheel

#### WHERE TO APPLY

For internal/external polished or finely honed granite surfaces.



RESTORE & RE-POLISH



PROVIDES DIRT RESISTANCE



# POLISHING

## STAR SHINE

- Vitreous effect
- High-performing cream
- Provides dirt resistance



CAN BE APPLIED WITH



Floor machine 150/175 rpm or orbital wheel

### WHERE TO APPLY

For internal/external polished or finely honed granite surfaces.

## UNIVERSAL GLOSSY

- No water required
- Ideal for mixed-materials
- Able to polish difficult stones



CAN BE APPLIED WITH



Brush, Roller, Lambs wool, Sprayer

### WHERE TO APPLY

For internal/external polished marble, granite and any compact natural stone. Quartz agglomerate, porcelain tiles and ceramics.

## PORCELAIN RESTORATION CREAM

- A little goes a long way
- It restores scratches and defects
- Easy to apply



CAN BE APPLIED WITH



Single disc machine with at least 1.5 HP; manual rotary brush

### WHERE TO APPLY

For internal/external polished.

## A3 YELLOW

- Vitreous effect
- High-performing powder
- Long-lasting results



CAN BE APPLIED WITH



Floor machine 150/175 rpm and roto-orbital machine

### WHERE TO APPLY

For marble, terrazzo, agglomerates, limestone and other compact calcium based stone.

## TCB 12

- Specific for polishing maintenance
- Long-lasting effect
- Easy and ready to use



CAN BE APPLIED WITH



Brush, Roller, Lambs wool, Sprayer

### WHERE TO APPLY

Agglomerate cement-marble, Agglomerate resin-marble, Slate, Sandstone, Basaltina - Lava Stone, Molted basalt, Cement tile, Concrete, Cotto, Granite, Limestone, Marble, Manufactured Stone (Eco-stone), Porphyry, Quartzite, Terracotta, Travertine, Tuff

## ABR 600

- Micro-honing cream
- It restores defects and abrasion
- Soft matt finish



CAN BE APPLIED WITH



Manually - Floor machine - Roto-Orbital

### WHERE TO APPLY

Marbles, Stones, Ceramic and reconstituted materials.







OF  
EXPERIEN

STONE  
CONCRETE  
MARBLE

Achieve b  
chemicals  
personal c